

1/4 COR 11/12 T5N, R3W

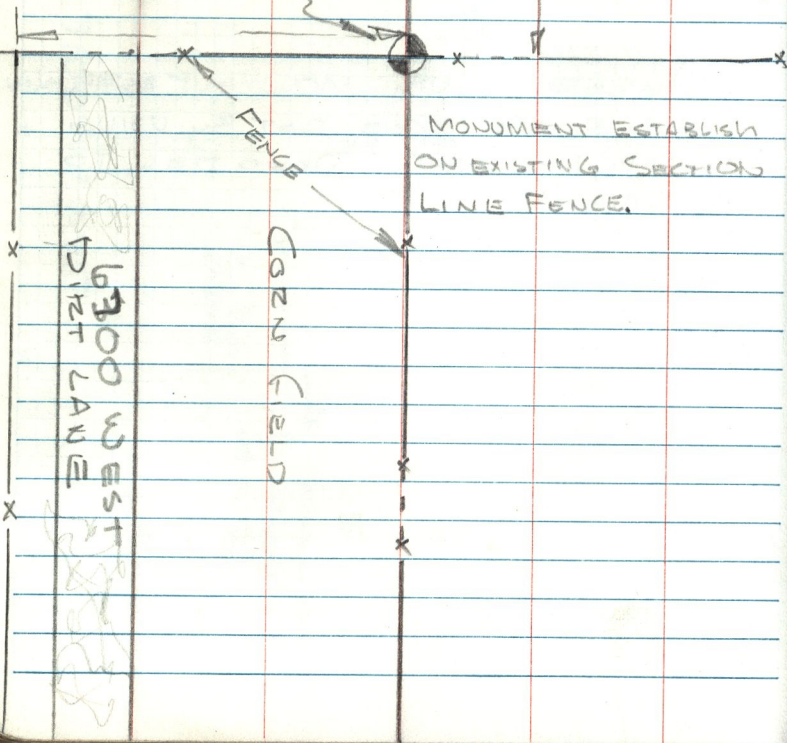
APRIL 5, 74  
COUNTY CREW

LOW PASTURE LAND

FENCE

WEBER COUNTY  
BRASS MONUMENT  
8" x 4" POST

MONUMENT ESTABLISH  
ON EXISTING SECTION  
LINE FENCE.



1300 WEST  
DIST LANE

CORN FIELD